



Apartment Paris 16th, Chaillot

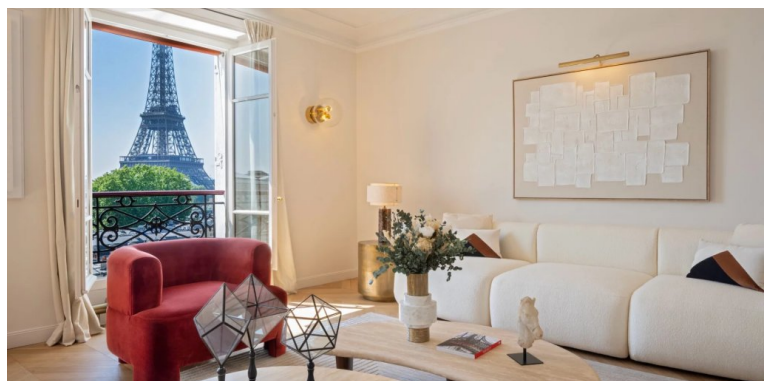


A Prestigious Address Facing the Eiffel Tower

3,450,000 € Agency fees included

Located in one of the most elegant areas of Paris's 16th arrondissement, this apartment sits just steps from the Palais de Tokyo, the Museum of Modern Art, and Place de l'Alma. Avenue du Président Wilson is lined with leafy trees and grand private residences, connecting the banks of the Seine to the Trocadéro. The neighborhood is known for its safety, refined ambiance, proximity to international schools, embassies, and cultural institutions—and above all, for its iconic views of the Eiffel Tower.

This 106 sqm apartment has been fully renovated with high-end materials and is in excellent condition, ready to move in. The layout includes an entrance hall, a spacious double living room (lounge and dining area) with stunning views of the Eiffel Tower, a fully equipped kitchen, two comfortable bedrooms, a bathroom, and a separate toilet. The property seamlessly combines the charm of classic Parisian architecture—wooden floors, decorative moldings, high ceilings—with modern-day comfort, and is situated in a prestigious building with an elevator and concierge service.








Sale - Apartment

3,450,000 € Agency fees included

85970850

 75116, Paris 16th

Details

Floor: 4th	Condition: Excellent condition
Total area: 106 m²	Availability: Free
View: Unobstructed	

Services

Lift	Alarm system
Digicode	Caretaker
Intercom	

Areas

Entrance	Reception room
Balcony	Eat-in kitchen
2 Bedrooms	2 Bathrooms / Lavatories

Proximities

Bus	Town centre
Shops	Doctor
Metro	Park
Supermarket	



ALEXANDRA YINYING LI

+33 6 85 42 45 08

all@aariane.com



Aariane

3 Avenue Duquesne
Paris 7th, France

+33 (0)1 45 49 06 65

www.aariane.com

contact@aariane.com







