

## Paris VII - Eiffel Tower view with Roof Terrasse



Total area	182,45 m <sup>2</sup> + 77 m <sup>2</sup> Terrasse
Floor	3rd
Price	8 000 000€
Property Fee	1936 € /quarter



On the top floor of one of the most beautifully decorated buildings on the south side of Champ de Mars, there is a luxury apartment with an area of 182m<sup>2</sup> and a height of 3.45m.

The apartment features 11 floor-to-ceiling windows leading to a 77m<sup>2</sup> magnificent terrace facing west, south, and east, offering a panoramic view of the Eiffel Tower and park.

The apartment includes a magnificent hexagonal entrance porch with a marble floor, a cloakroom, and a guest toilet. There's also a lounge with a fireplace, a dining room, a kitchen with a bar and marble flooring, a master bedroom with separate access, a separate shower, a pantry, and wood flooring. Additionally, there are two more bedrooms with Versailles wood flooring, and they have elevator access to the terrace. The apartment also has a bathroom, a shower room, and a large cellar.

All the rooms in the apartment are equipped with air conditioning.





银舍地产  
AARIANE  
Real Estate



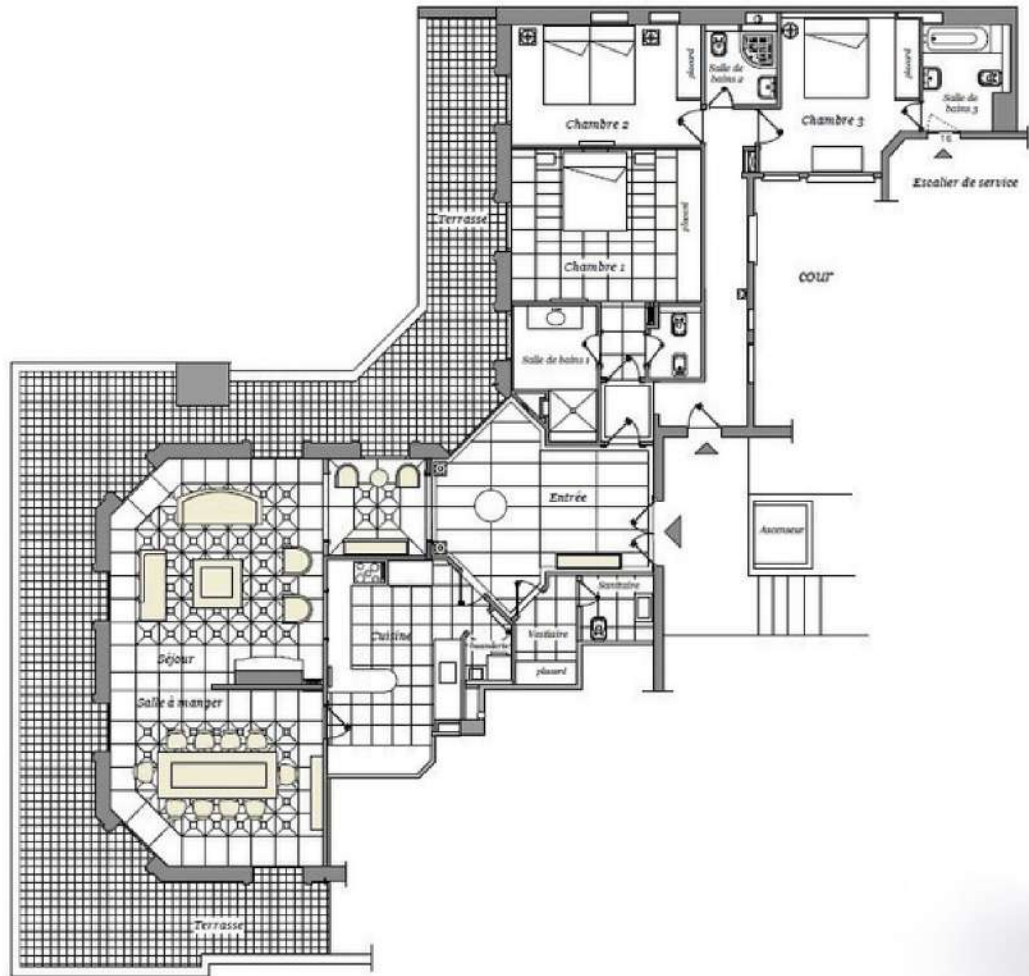






银舍地产  
AARIANE  
Real Estate

Champ de Mars  
Allée Adrienne Lecourneur



Avenue de la Motte-Picquet



银舍地产  
AARIANE  
Real Estate





银舍地产  
A A R I A N E  
Real Estate



银舍·巴黎

A A r i a n e Real Estate

*Asian High Net Worth Individuals Expert*

## Contact

Alexandra Yinying LI

李银盈 / Founder

Tel/WhatsApp/WeChat: +33 (0)6 85 42 45 08

Email: [all@aariane.com](mailto:all@aariane.com)