

Paris 8 - Parc Monceau/Lisbonne



Floor	No. of rooms	Surface	Price
4th	5	271m ²	4 980 000 €



Exceptional flat on the 4th floor with balconies and views of Parc Monceau - 5 bedrooms.

This 271 m² corner flat, in excellent condition, comprises: an entrance hall, a lounge, a "pièce à vivre" (or reception dining room), a dining room with a furnished and equipped open-plan kitchen, a master suite with dressing room, bathroom, four other bedrooms, two shower rooms, a bathroom, two separate toilets and a laundry room.

High ceilings and high-quality contemporary renovation have preserved the beautiful old features (herringbone parquet flooring, mouldings, fireplaces).



INFORMATION

Orientation: West South
View: Unobstructed
Heating: Gas Collective radiator
Built in: 1890
Condition: Excellent condition
Utilities: 1 000 € /month
Property tax: 4 334 € / month

SERVICES

Lift, Caretaker, Access Control, Entryphone

SURFACES

5 Bedrooms
1 Balcony
1 Basement
1 Box







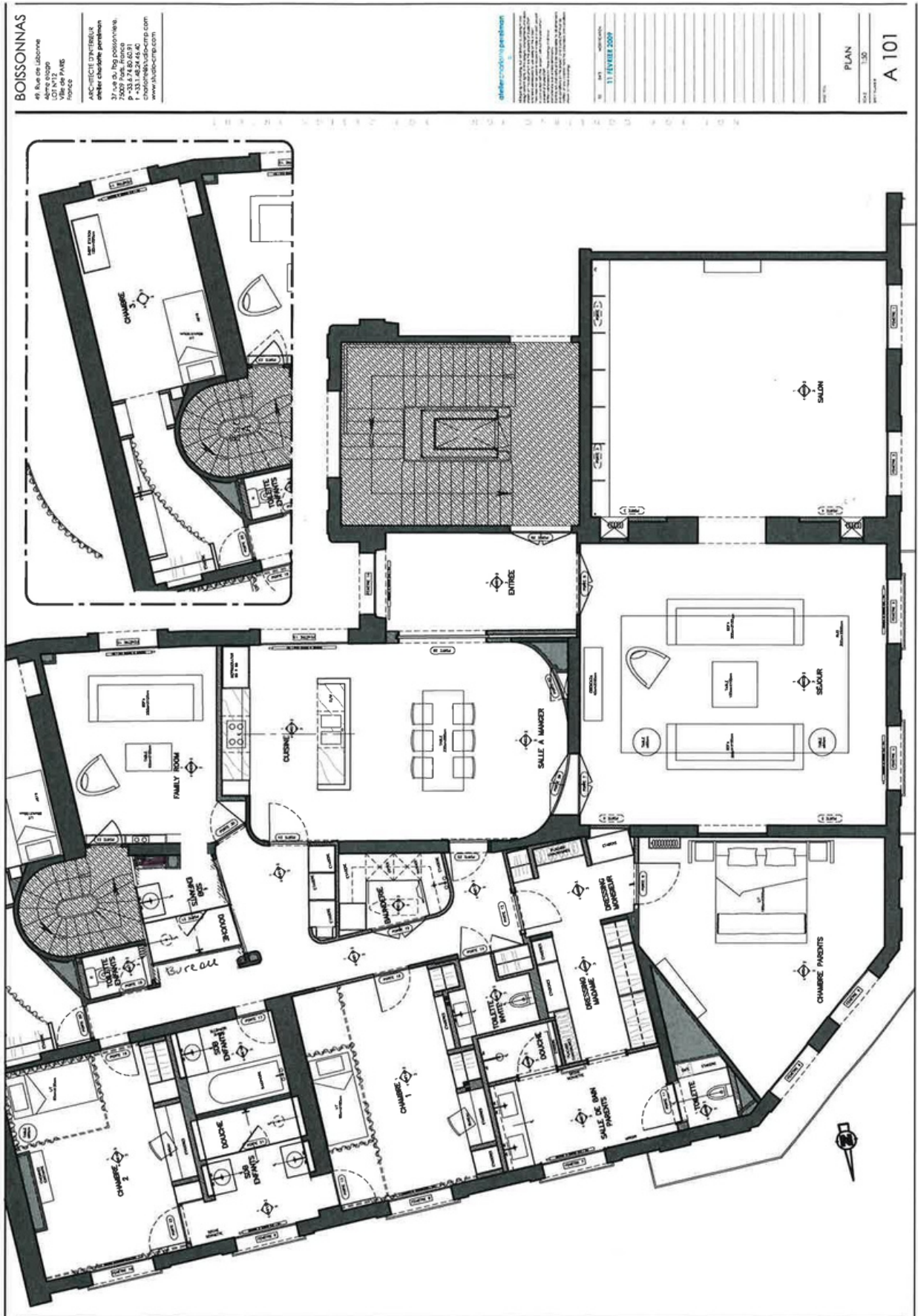


银舍地产
A A R I A N E
Real Estate





银舍地产
A A R I A N E
Real Estate





银舍地产
A A R I A N E
Real Estate





Contact

Alexandra Yinying LI

李银盈 / Founder

Tel/WhatsApp/WeChat: +33 (0)6 85 42 45 08

Email: all@ariane.com